

***BUSINESS MEETING BETWEEN THE EUROPEAN COUNTRIES'
COMMERCIAL ATTACHES AND FOREIGN
AND BULGARIAN CONSULTANT COMPANIES***

9 December 2011, Sofia Bulgaria



G **EOGNOSI S.A.**
GEO TECHNICAL - GEOLOGICAL INVESTIGATIONS & DESIGN
CONSULTANT ENGINEERS & GEOLOGISTS

Company Profile

- Established 1983
- Privately owned S.A. company
- Business: engineering services mainly in the field of geotechnical, geological and geoenvironmental surveys and studies as well as in geotechnical design of infrastructure projects for both the public and private sector.
- Highly qualified and specialized personnel
- ISO 9001:2008

Company Profile

GEOGNOSI S.A. is registered at the Greek National Bureau of Engineering Consulting Firms (Γ.Ε.Μ.) with registration number 232. GEOGNOSI S.A. possess the highest “E Level” of certification in Greece, with regards to geotechnical engineering investigations, analyses and design. The establishment is supported by 11 Partners, most of them (9 out of 11) have also a degree in Civil Engineering and post-graduate studies in geotechnical and geoenvironmental engineering.

GEOGNOSI S.A. is considered to be amongst the top 3 geotechnical companies in Greece and is situated between the 20th and 30th position amongst all Hellenic Engineering Consulting companies of all kinds.

GEOGNOSI’s S.A. permanent staff of 50 people, mainly consisting of qualified scientists and technicians specialized in geotechnical, geological and geoenvironmental investigations and design, guarantees the high quality of our consulting services.

Company Profile



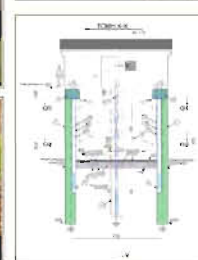
Δειγματοληπτικές γεωτρήσεις και επιτόπου δοκιμές:
Σπρώξ, Θάλασας
SPT, PMT, LUDEON, MAAG, LEFRANC, VANE TESTS.
CROSSHOLE/DOWNHOLE TESTS. Εγκαταστάσεις και μετρήσεις πεζομέτρων, εκλογών, εκτασιόμετρων. Δειγματοληψιών παντός τύπου.

Στατικές πεντρομετρήσεις 0-200kN, 0-60m:
CPT, CRTU, S-CRTU.

Εργαστήριο Γεωτεχνικής Μηχανικής:
Δοκιμές εδαφομηχανικής/βροχομηχανικής, αδρανών, συμπεριλαμβανομένης μη εντονής σαββατομετρικών και χημικής ανάλυσης εδάφους - νερού.

Επιτόπου δοκιμές:
Ποιτικές έλεγχοι χωματουργικών και γεωεπισκευών.
Δοκιμαστικές φορτίες φρεατοσυστημάτων.
Δοκιμαστικές φορτίες μικροσυστημάτων και στερεών θεμελίωσης φυτορριζικών πλάκων.
Δοκιμαστικές αντήλασης.
Δοκιμαστικές φορτίες πλάκας και επί τόπου DBR.

Γεωλογικές έρευνες - μελέτες:
Χαρτογράφηση κ.λπ. γεωλογικές έρευνες.
Μετρήσεις και μελέτες γεωφυσικές και υδρογεωλογικές.



Γεωτεχνικές μελέτες:
Επιμελημένων παντός τύπου. Χωματουργικών έργων, σκαφών - υποστήριξης Σπράγγων.
Επιχωμάτων ασφαλτών - ασφλών. Ορυμάτων, εδαφορριζώνων, κρητιλιωμάτων.
Αντιστήριξων προσωρινών - μόνιμων. Αποκατάστασης Κατασθέντων.
Βελτίωση υπεδάφους με διάφορες μεθόδους. Υπόγειος υδραυλικής - αποστραγγίσεων.

Μελέτες φραγμάτων, Διευθετήσεων υδατορευμάτων:
Χωμάτινα - Αβύρρητα φράγματα, Υδαυτικά έργα φραγμάτων, Λιμνοθάλασσών. Συναδά έργα υδρολογικής εκτίμησης, υποστήριξης. Διευθετήσεις πύργων - υδατορευμάτων και έργα αντιλημμενής προστασίας.

Μελέτες ΧΥΤΑ και ΧΑΔΑ.

Υπηρεσίες Συμβούλου:
Διαχείριση - έλεγχος μελετών και κατασκευών σε γεωτεχνικά - γεωλογικά - υδραυτικά έργα.



Γεωτεχνικές Γεωλογικές Μελέτες - Σύμβουλοι Μελετητές www.geognosi.gr
Τ.Θ. 60480, Τ.Κ. 570 01, Οδμή Θεσσαλονίκη
Τηλ: 2310-383500, Fax: 2310-383501, E-mail: geognosi@geognosi.gr

Company location



P.O. Box 60480

Zip Code 570 01

Thermi Thessaloniki

tel.: +30 2310-383.500

fax.: +30 2310-383.501

email : geognosi@geognosi.gr



BUSINESS MEETING BETWEEN THE EUROPEAN COUNTRIES' COMMERCIAL ATTACHES AND FOREIGN AND BULGARIAN CONSULTANT COMPANIES, 9 December 2011, Sofia Bulgaria

Key Personnel

GEOGNOSI's S.A. Board of Directors consists of the following Senior Partners:

Naskos Nikolaos

Lontzetidis Konstantinos

Karatzovalis Kyriakos

Tsatsos Nikos

Dimaras Konstantinos,

Mavridis George

Mitsios Evaggelos

Patramanis Thomas

Oikonomou Anastasios

Dr. Civil Engineer, Managing Director

Civil Engineer, Chairman of the BOD

Civil Engineer, General Manager

M. Eng. Civil Engineer, Head of Eng. Projects

Geologist, Head of Field Works

Dr. Civil Engineer, Head of IT Department

Economist, Head of Financial Department

Civil Engineer

Civil Engineer

Services

**Geotechnical, Geological and Geoenvironmental Survey,
Engineering Interpretation & Evaluation**



On shore geotechnical investigations



Services

Geotechnical, Geological and Geoenvironmental Survey,
Engineering Interpretation & Evaluation



Offshore geotechnical investigations



BUSINESS MEETING BETWEEN THE EUROPEAN COUNTRIES' COMMERCIAL ATTACHES AND FOREIGN AND BULGARIAN CONSULTANT COMPANIES, 9 December 2011, Sofia Bulgaria

Services

Geotechnical, Geological and Geoenvironmental Survey,
Engineering Interpretation & Evaluation



Pressuremeter tests



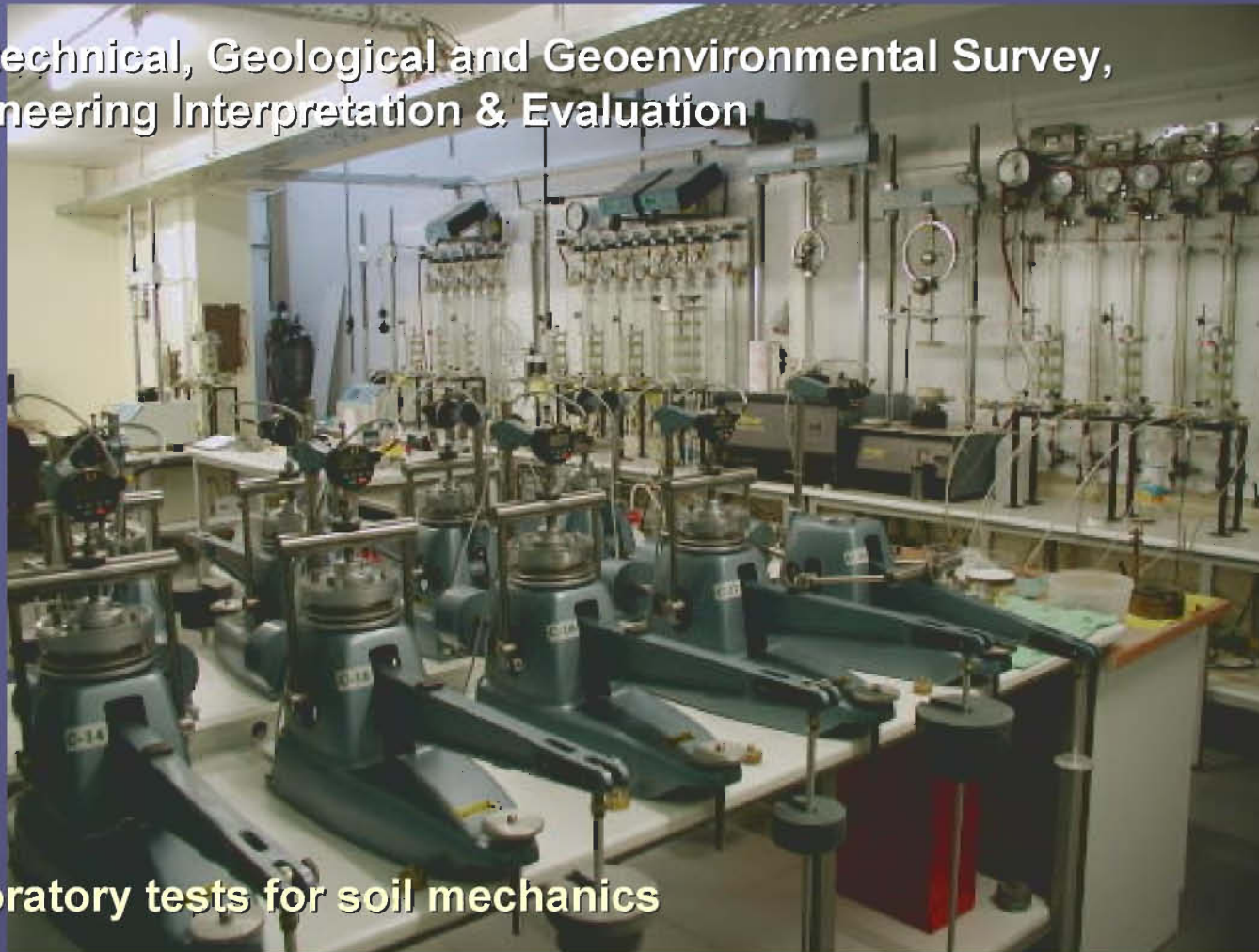
**Geotechnical, Geological and Geoenvironmental Survey,
Engineering Interpretation & Evaluation**



Cone penetration tests CPT

Services

**Geotechnical, Geological and Geoenvironmental Survey,
Engineering Interpretation & Evaluation**



Laboratory tests for soil mechanics

Services

Geotechnical, Geological and Geoenvironmental Survey,
Engineering Interpretation & Evaluation



Laboratory tests for rock mechanics



Services

In situ Measurements & Monitoring



Pile loading tests



BUSINESS MEETING BETWEEN THE EUROPEAN COUNTRIES' COMMERCIAL ATTACHES AND FOREIGN AND BULGARIAN CONSULTANT COMPANIES, 9 December 2011, Sofia Bulgaria

Services

In situ Measurements & Monitoring



Pull out tests



Services

In situ Measurements & Monitoring



Inclinometer tests



Services

In situ Measurements & Monitoring



Cross hole ultrasonic and PIT tests

BUSINESS MEETING BETWEEN THE EUROPEAN COUNTRIES' COMMERCIAL ATTACHES AND FOREIGN AND BULGARIAN CONSULTANT COMPANIES, 9 December 2011, Sofia Bulgaria

Services

Geotechnical Design - Supervision Quality Control of geotechnical works



Ground improvement

BUSINESS MEETING BETWEEN THE EUROPEAN COUNTRIES' COMMERCIAL ATTACHES AND FOREIGN AND BULGARIAN CONSULTANT COMPANIES, 9 December 2011, Sofia Bulgaria

Services

Geotechnical Design - Supervision Quality Control of geotechnical works



Foundation designs

Services

Geotechnical Design - Supervision Quality Control of geotechnical works



Slope stability of excavations - cuts

Services

Geotechnical Design - Supervision Quality Control of geotechnical works



Soil nailing

Services

Geotechnical Design - Supervision Quality Control of geotechnical works



Reinforced embankments

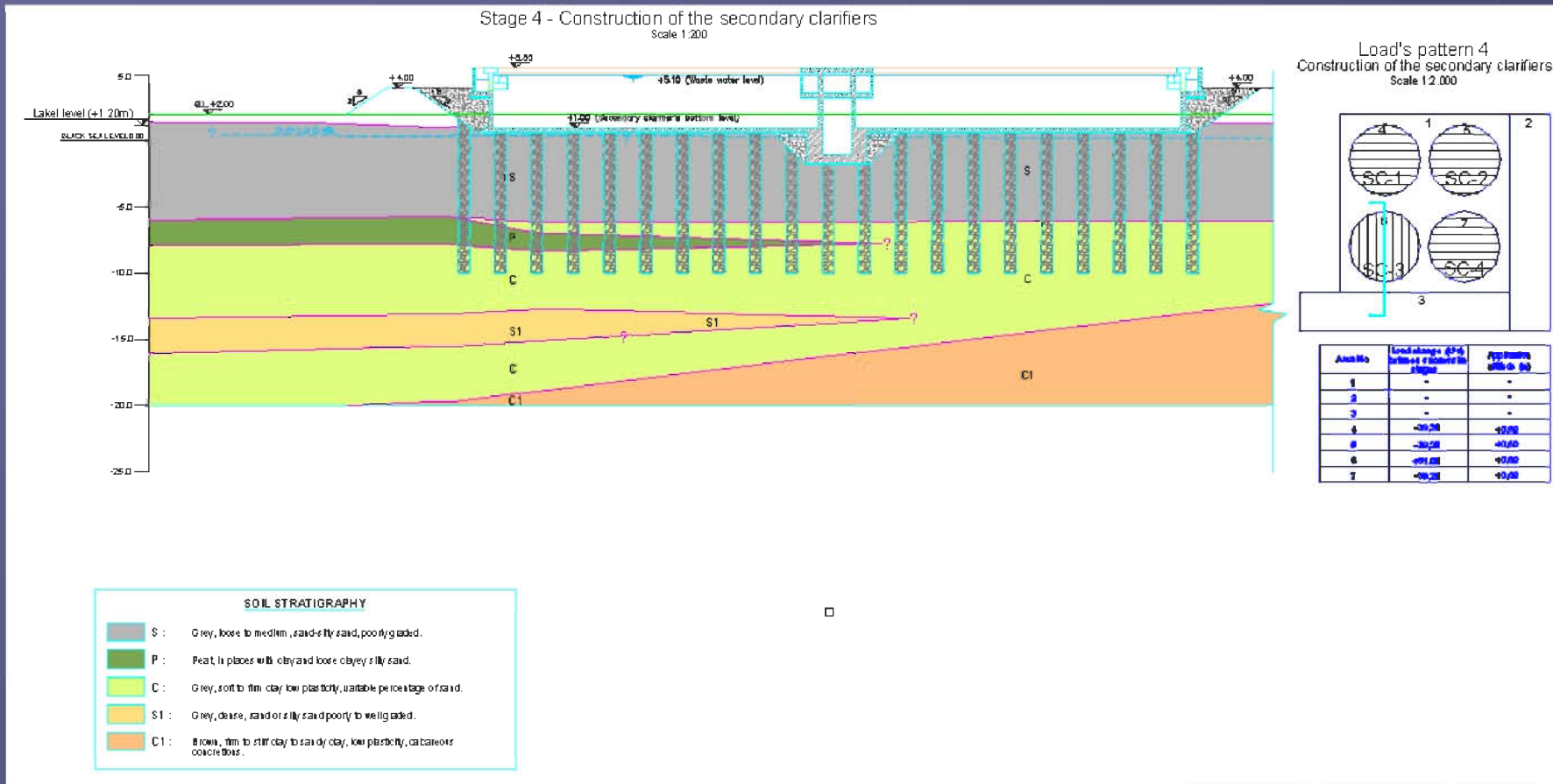
Services

Geotechnical Design - Supervision Quality Control of geotechnical works



Landslide stabilization

Projects



Constanta Sewerage and Wastewater Treatment - Ground improvement

BUSINESS MEETING BETWEEN THE EUROPEAN COUNTRIES' COMMERCIAL ATTACHES AND FOREIGN AND BULGARIAN CONSULTANT COMPANIES, 9 December 2011, Sofia Bulgaria

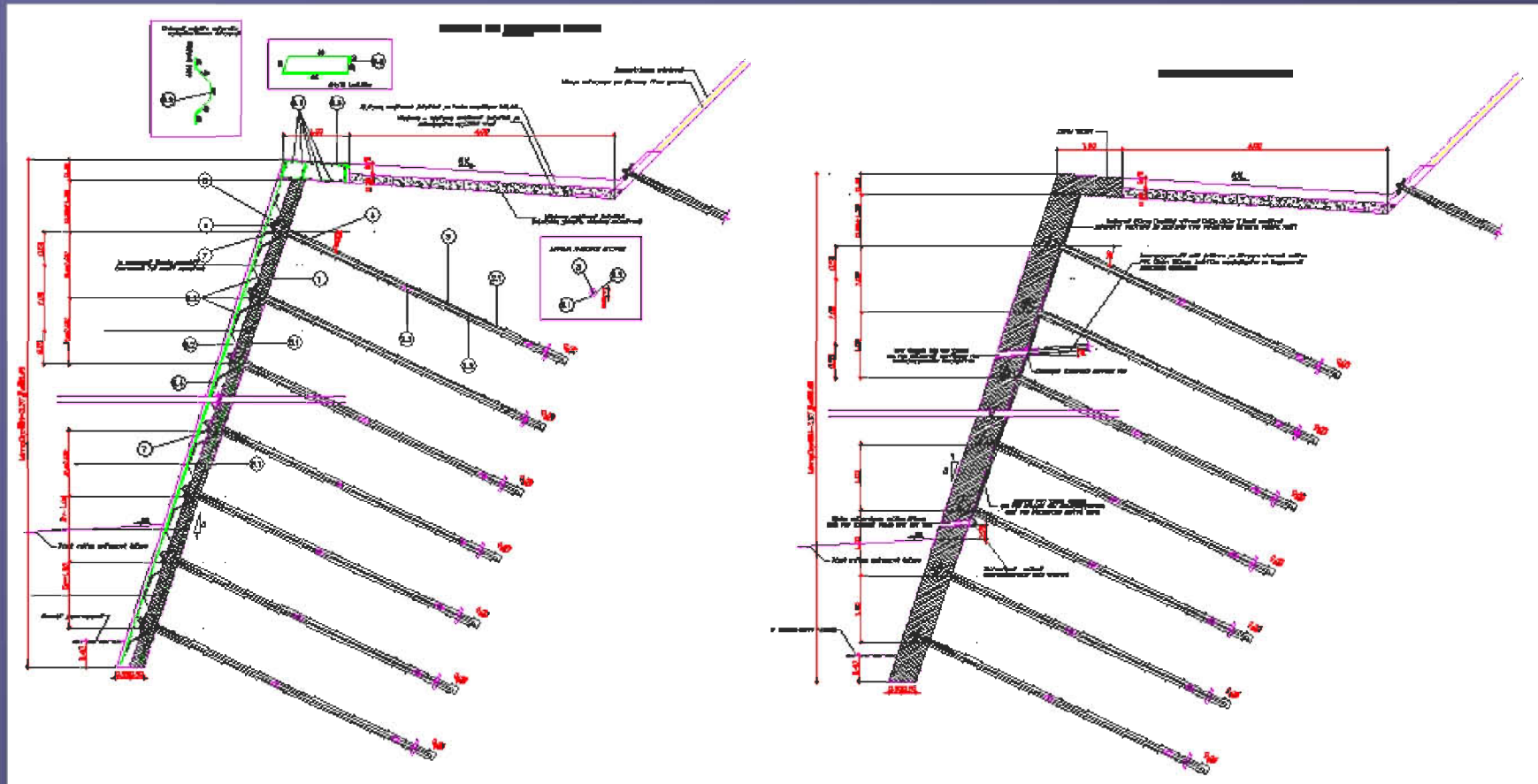
Projects



Constanta Sewerage and Wastewater Treatment - Ground improvement

BUSINESS MEETING BETWEEN THE EUROPEAN COUNTRIES' COMMERCIAL ATTACHES AND FOREIGN AND BULGARIAN CONSULTANT COMPANIES, 9 December 2011, Sofia Bulgaria

Projects



Agia Anastasia, Ioannina – Soil nailing

Projects



Agia Anastasia, Ioannina – Soil nailing

Projects



Agia Anastasia, Ioannina – Soil nailing

Projects



Agia Anastasia, Ioannina – Soil nailing

Projects



Metsovo - Reinforced embankments



BUSINESS MEETING BETWEEN THE EUROPEAN COUNTRIES' COMMERCIAL ATTACHES AND FOREIGN AND BULGARIAN CONSULTANT COMPANIES, 9 December 2011, Sofia Bulgaria

Projects



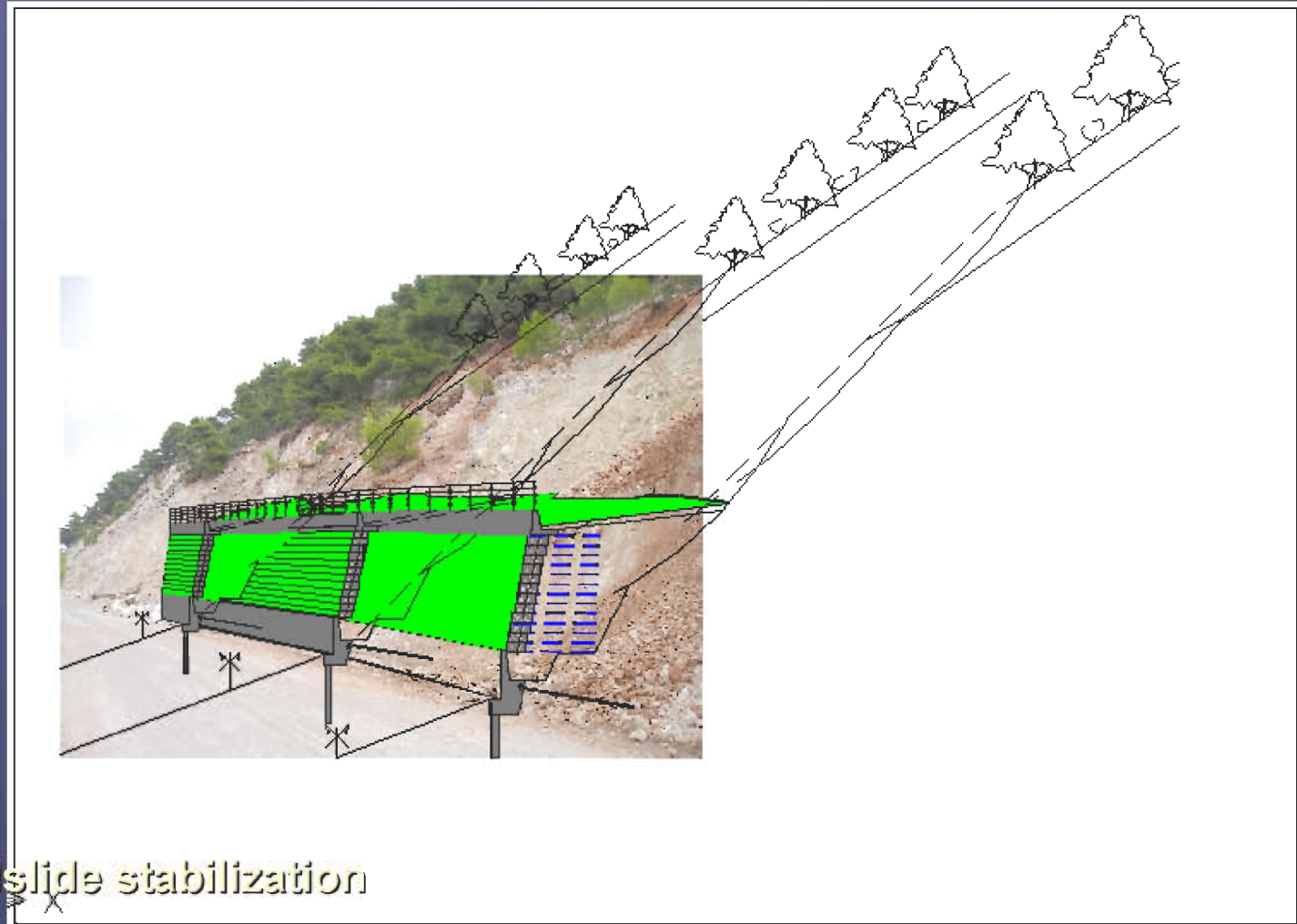
Metsovo - Reinforced embankments

Projects



Lefkada - Landslide stabilization

Projects



Projects



Lefkada - Landslide stabilization

Projects



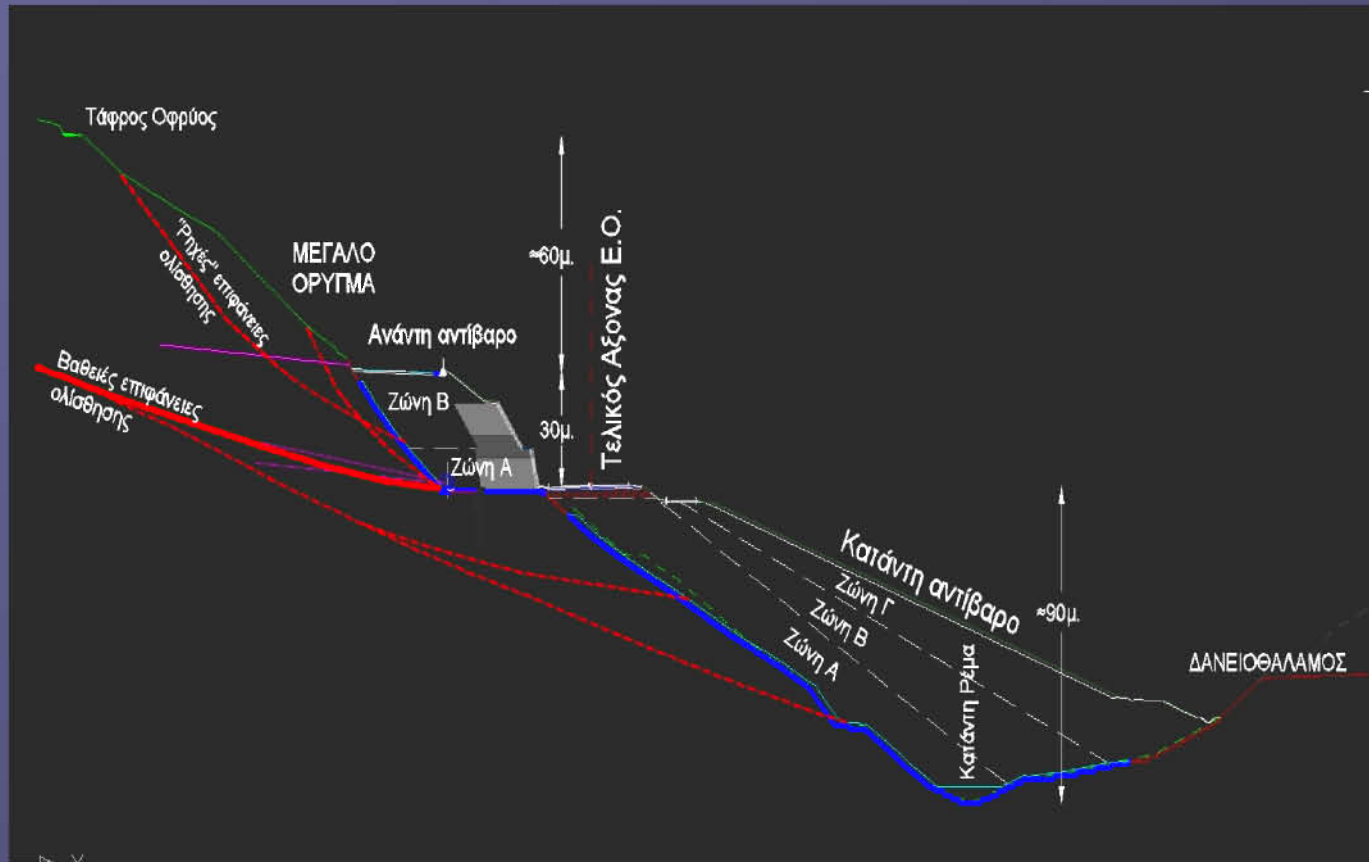
Kassandra, Halkidiki - Landslide stabilization

Projects



Metsovo - Landslide stabilization

Projects



Metsovo - Landslide stabilization

Projects



Metsovo - Landslide stabilization

BUSINESS MEETING BETWEEN THE EUROPEAN COUNTRIES' COMMERCIAL ATTACHES AND FOREIGN AND BULGARIAN CONSULTANT COMPANIES, 9 December 2011, Sofia Bulgaria

Projects



Metsovo - Landslide stabilization

GEOGNOSI S.A. Geotechnical – Geological Investigations & Design Consultant Engineers & Geologists

Customers

The logo for DRAGADOS, featuring the word in bold yellow capital letters on a blue rectangular background.The logo for EGNATIA ODOS SA, featuring a stylized blue and green circular icon to the left of the text "EGNATIA ODOS SA" in blue.The logo for ferrovial agroman, with "ferrovial" in orange lowercase letters and "agroman" in grey lowercase letters below it.The logo for ExelGroup, with "ExelGroup" in white and yellow text on a black background, and "Fresh thinking" and "GREEN TECHNOLOGIES" in smaller white text below.The logo for ATTIKO METRO S.A., featuring a white classical building facade on a blue background above the text "ATTIKO METRO S.A." in white.The logo for METRO ΘΕΣΣΑΛΟΝΙΚΗΣ, featuring a white train on a blue background above the text "METRO ΘΕΣΣΑΛΟΝΙΚΗΣ" and "ATTIKO METRO A.E." in white.The logo for Porto Carras GRAND RESORT, with "Porto Carras" in white cursive script and "GRAND RESORT" in white block letters on a blue background.The logo for EPTOC, with the letters in blue and orange.The logo for HELLENIC PETROLEUM, featuring a blue circle with a white cross and stripes above the text "HELLENIC PETROLEUM" in blue.The logo for AKTOR, with a red triangle above the text "AKTOR" and "member of ELLAKTOR Group" below.The logo for TERNNA S.A., with a stylized blue 'T' icon to the left of the text "TERNNA S.A." and "G E K T E R N A G R O U P" below.The logo for J&P, with the letters in black on a yellow square background.

BUSINESS MEETING BETWEEN THE EUROPEAN COUNTRIES' COMMERCIAL ATTACHES AND FOREIGN AND BULGARIAN CONSULTANT COMPANIES, 9 December 2011, Sofia Bulgaria

***BUSINESS MEETING BETWEEN THE EUROPEAN COUNTRIES'
COMMERCIAL ATTACHES AND FOREIGN
AND BULGARIAN CONSULTANT COMPANIES***

9 December 2011, Sofia Bulgaria



G **EOGNOSI S.A.**
GEO TECHNICAL - GEOLOGICAL INVESTIGATIONS & DESIGN
CONSULTANT ENGINEERS & GEOLOGISTS